

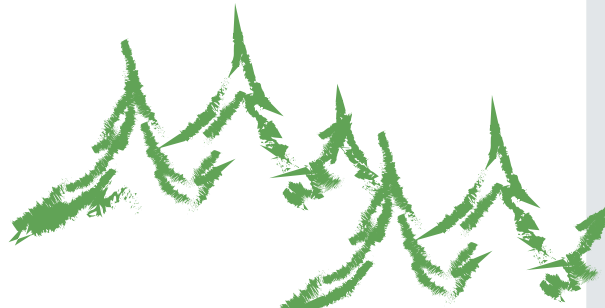
Increasing Safety, Security, Support and Protection

Unique circumstances in our communities require unique approaches for research

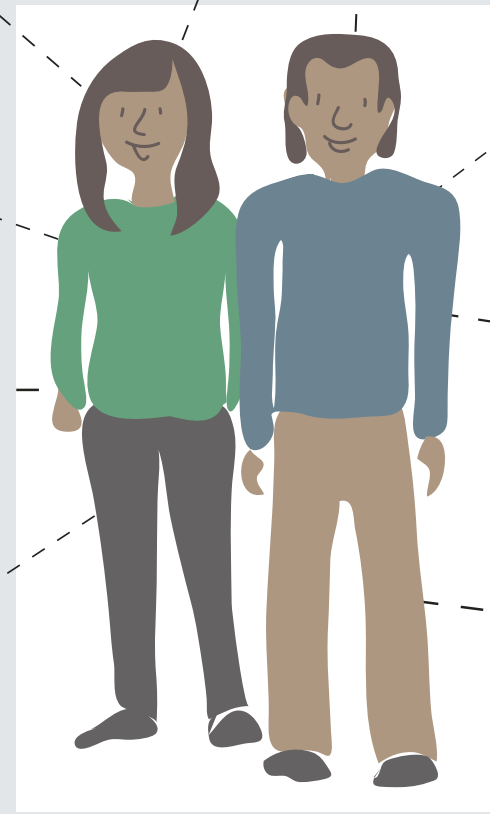


First Nations Health Authority
Health through wellness

Situations



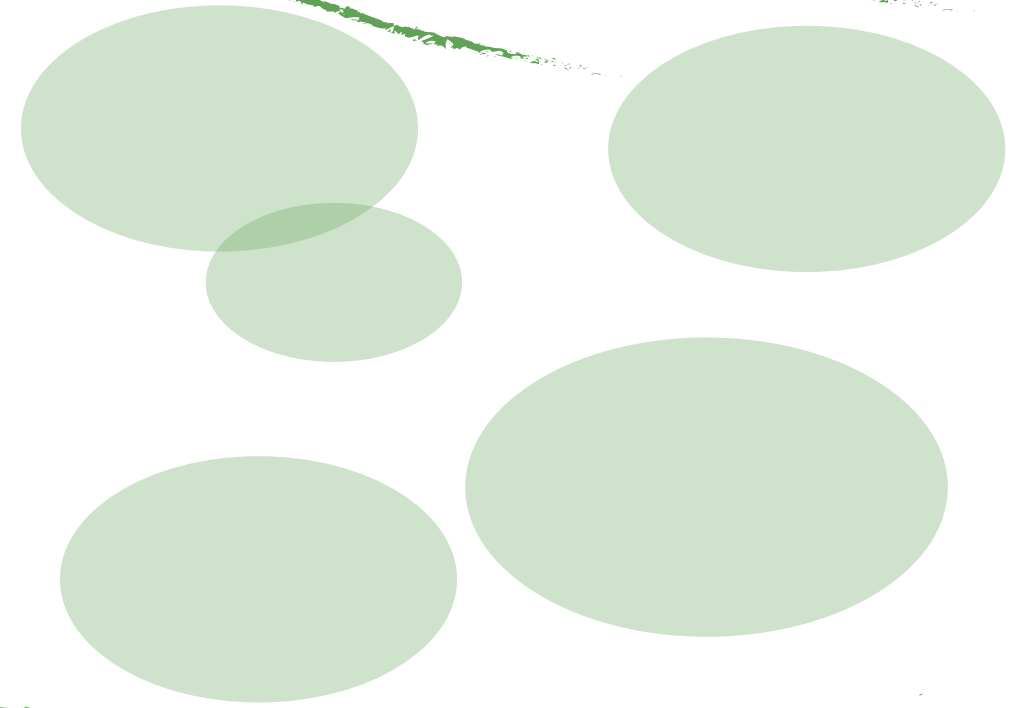
Aligning to the Directives for safety and protection



Individuals

Who in our communities needs special protections or considerations in proposed research projects?

Relationships



Ethics guides behaviour in conducting research. What are the factors and who are the people in our communities that require unique sets of research ethics and practices?

ETHICS

Directive #1: Community-Driven, Nation-Based | Directive #2: Increase First Nations Decision-Making and Control

| Directive #3: Improve Services | Directive #4: Foster Meaningful Collaboration and Partnership | Directive #5: Develop Human and Economic Capacity | Directive #6: Be Without Prejudice

Sam Bradd | Drawing Change
drawingchange.com

to First Nations Interests | Directive #7: Function at a High Operational Standard